



The Introduction Screen;

requires that a password be entered prior to any actions being taken. Once the password has been entered the following options are available .

- a/ **New Front Wheel** button loads the screen to required to create a new front wheel from a defined hub, rim and spokes.
- b/ **New Rear Wheel** button loads the screen to required to create a new rear wheel from a defined hub, rim and spokes.
- c/ **New Wheel Set** button loads the screen to required to create a new wheel set from a defined hub set, rim and spokes.
- d/ **Saved Wheel Set** button loads the screen to required to view either a pre-existing wheel set or a pre-existing front or rear wheel.
- e/ **Exit** button exits the program.
- f/ **Add Front Hub** buttons loads the screen to save a new front hub and its dimensions.
- g/ **Add Rear Hub** buttons loads the screen to save a new rear hub and its dimensions.
- h/ **Add Spoke** buttons loads the screen to save a new spoke and its end diameter.
- i/ **Add Rim** buttons loads the screen to save a new rim and its diameter.
- j/ **Settings** from the menu will load the screen that adjusts fonts, resolution, licensee information and password.
- k/ **About** from the menu loads an information screen about the program, copyright, Microsports and has a built in systems analyzer.

Wheel Torque
File Add About

FRONT WHEEL

Back Exit
Print Save

No. of Spokes

	36	32	28
Radial	279.5	279.5	279.5
1 X	280.8	281.1	281.6
2 X	284.4	285.6	287.3
3 X	289.8	292.1	295.3
4 X	296.3	N/A	N/A

<< More Less >>

Hub: Campagnolo Record
Rim: Mavic CXP-11
Spoke: DT Champion 14G

Rim Diameter: 600 mm
Spoke Diameter: 2 mm

© Microsports 1999

New Front Wheel screen has the following options;

- Hub** list shows a list of front hubs currently in the database, if the database does not contain the desire hub simply click on **Add** from the menu at the top left of the screen, select **Add Front Hub** from the list and insert the make & model of hub, flange width and flange diameter in the appropriate boxes. Click the **Save & Exit** button and the hub will immediately be added to the list.
- Rim** list shows a list of rims currently in the database, if the database does not contain the desire rim simply click on **Add** from the menu at the top left of the screen, select **Add Rim** from the list and insert the make & model of rim, rim diameter in the appropriate boxes. Click the **Save & Exit** button and the rim will immediately be added to the list.
- Spoke** list shows a list of spokes currently in the database, if the database does not contain the desire spoke simply click on **Add** from the menu at the top left of the screen, select **Add Spoke** from the list and insert the make & model of spoke, spoke diameter in the appropriate boxes. Click the **Save & Exit** button and the spoke will immediately be added to the list.
- Print** button prints all relevant details of the wheel including hub, rim, spokes and spoke lengths for all displayed spoke numbers.
- Save** button or menu item saves the current wheel to a database.
- Back** button or menu item returns the user to the previous screen.
- Exit** button or menu item exits the program.
- More** button increases the number of spoke holes by 4 each time to a maximum of 48.
- Less** button decreases the number of spoke holes by 4 each time to a minimum of 12.

Wheel Torque
File Add About

REAR WHEEL

Back Exit
Print Save

No. of Spokes

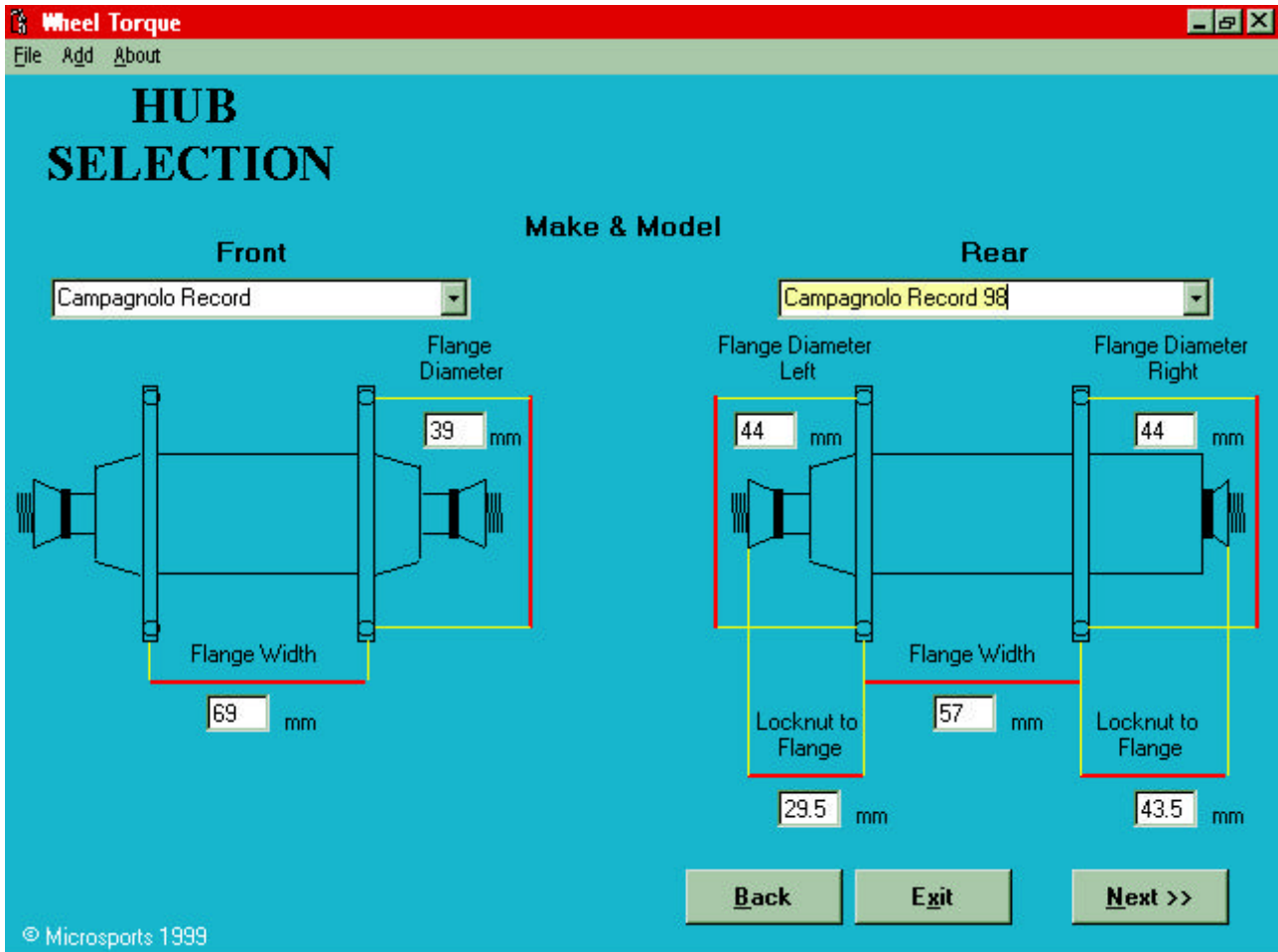
	36		32		28	
	Left	Right	Left	Right	Left	Right
Radial	277.2275.9	277.2275.9	277.2275.9	277.2275.9	277.2275.9	277.2275.9
1 X	278.7277.3	279.1277.7	279.6278.3	279.6278.3	279.6278.3	279.6278.3
2 X	282.8281.5	284.2282.9	286.2284.9	286.2284.9	286.2284.9	286.2284.9
3 X	289.1287.7	291.8290.5	295.4294.1	295.4294.1	295.4294.1	295.4294.1
4 X	296.5295.2	N/A	N/A	N/A	N/A	N/A

<< More Less >>

© Microsports

New Rear Wheel screen has the following options;

- Hub** list shows a list of rear hubs currently in the database, if the database does not contain the desire hub simply click on **Add** from the menu at the top left of the screen, select **Add Rear Hub** from the list and insert the make & model of hub, flange width and flange diameter etc. in the appropriate boxes. Click the **Save & Exit** button and the hub will immediately be added to the list.
- Rim** list shows a list of rims currently in the database, if the database does not contain the desire rim simply click on **Add** from the menu at the top left of the screen, select **Add Rim** from the list and insert the make & model of rim, rim diameter in the appropriate boxes. Click the **Save & Exit** button and the rim will immediately be added to the list.
- Spoke** list shows a list of spokes currently in the database, if the database does not contain the desire spoke simply click on **Add** from the menu at the top left of the screen, select **Add Spoke** from the list and insert the make & model of spoke, spoke diameter in the appropriate boxes. Click the **Save & Exit** button and the spoke will immediately be added to the list.
- Print** button prints all relevant details of the wheel including hub, rim, spokes and spoke lengths for all displayed spoke numbers.
- Save** button or menu item saves the current wheel to a database.
- Back** button or menu item returns the user to the previous screen.
- Exit** button or menu item exits the program.
- More** button increases the number of spoke holes by 4 each time to a maximum of 48.
- Less** button decreases the number of spoke holes by 4 each time to a minimum of 16.



New Wheel Set Hubs screen has the following options;

- a/ **Front Hub** list shows a list of front hubs currently in the database, if the database does not contain the desire hub simply click on **Add** from the menu at the top left of the screen, select **Add Front Hub** from the list and insert the make & model of hub, flange width and flange diameter in the appropriate boxes. Click the **Save & Exit** button and the hub will immediately be added to the list.
- b/ **Rear Hub** list shows a list of rear hubs currently in the database, if the database does not contain the desire hub simply click on **Add** from the menu at the top left of the screen, select **Add Rear Hub** from the list and insert the make & model of hub, flange width and flange diameter etc in the appropriate boxes. Click the **Save & Exit** button and the hub will immediately be added to the list.
- c/ **Back** button or menu item returns the user to the previous screen.
- d/ **Exit** button or menu item exits the program.
- e/ **Next** button goes to the next screen.


Wheel Torque
File Add About

Rim & Spoke Selection

Spokes DT Champion 15G
Spoke Diameter 1.8 mm
Rim Mavic CXP-11
Rim Diameter 600 mm

No. of Spokes

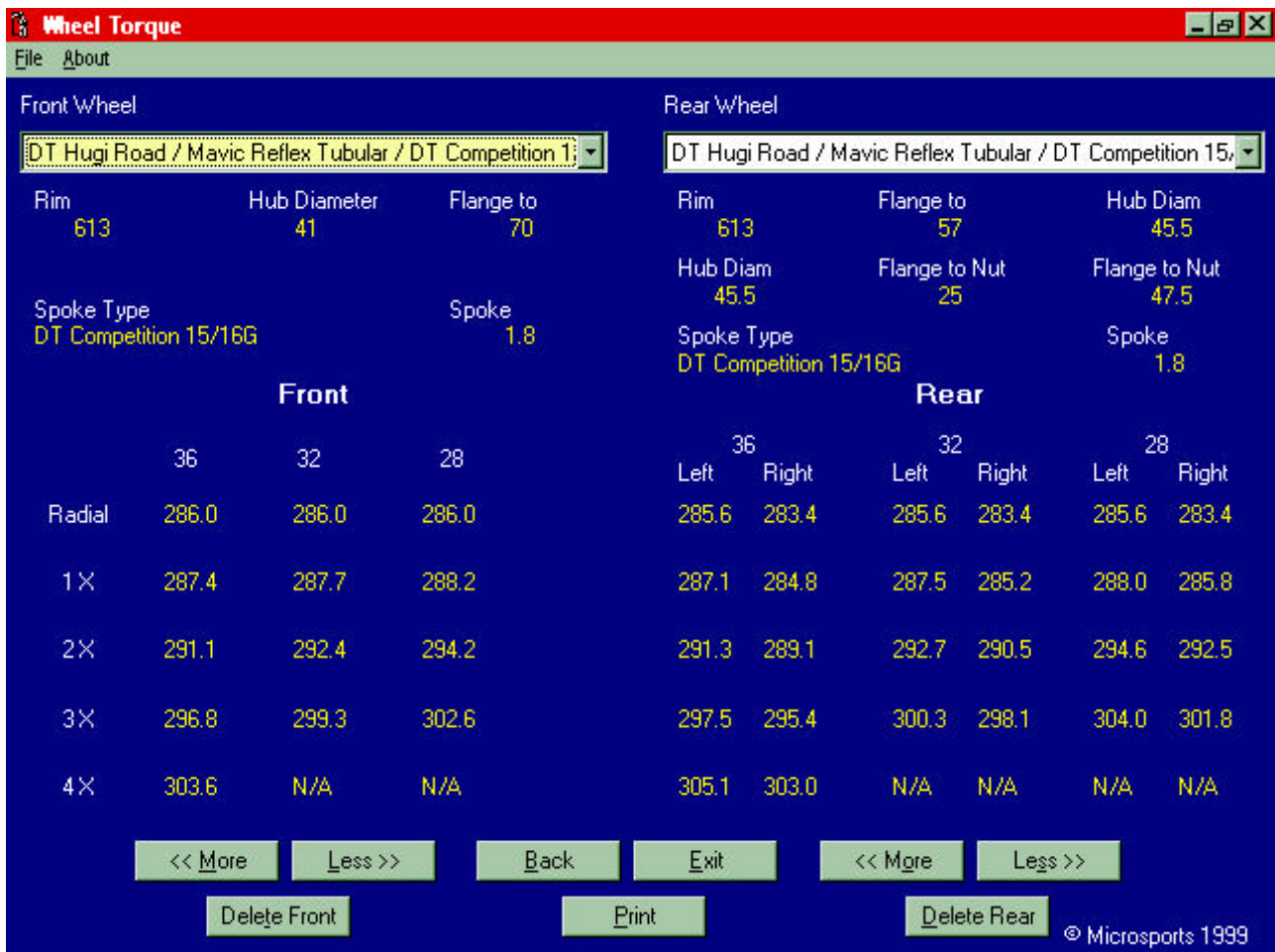
	Front			Rear			
	36	32	28	36	32	28	
				Left	Right	Left	Right
Radial	281.7	281.7	281.7	279.	277.9	279.4	277.9
1 X	283.0	283.3	283.8	280.8	279.	281.	280.3
2 X	286.5	287.7	289.4	284.8	283.	286.1	286.
3 X	291.9	294.2	297.4	290.9	289.	293.1	295.8
4 X	298.3	N/A	N/A	298.	296.	N/A	N/A



© Microsports 1999

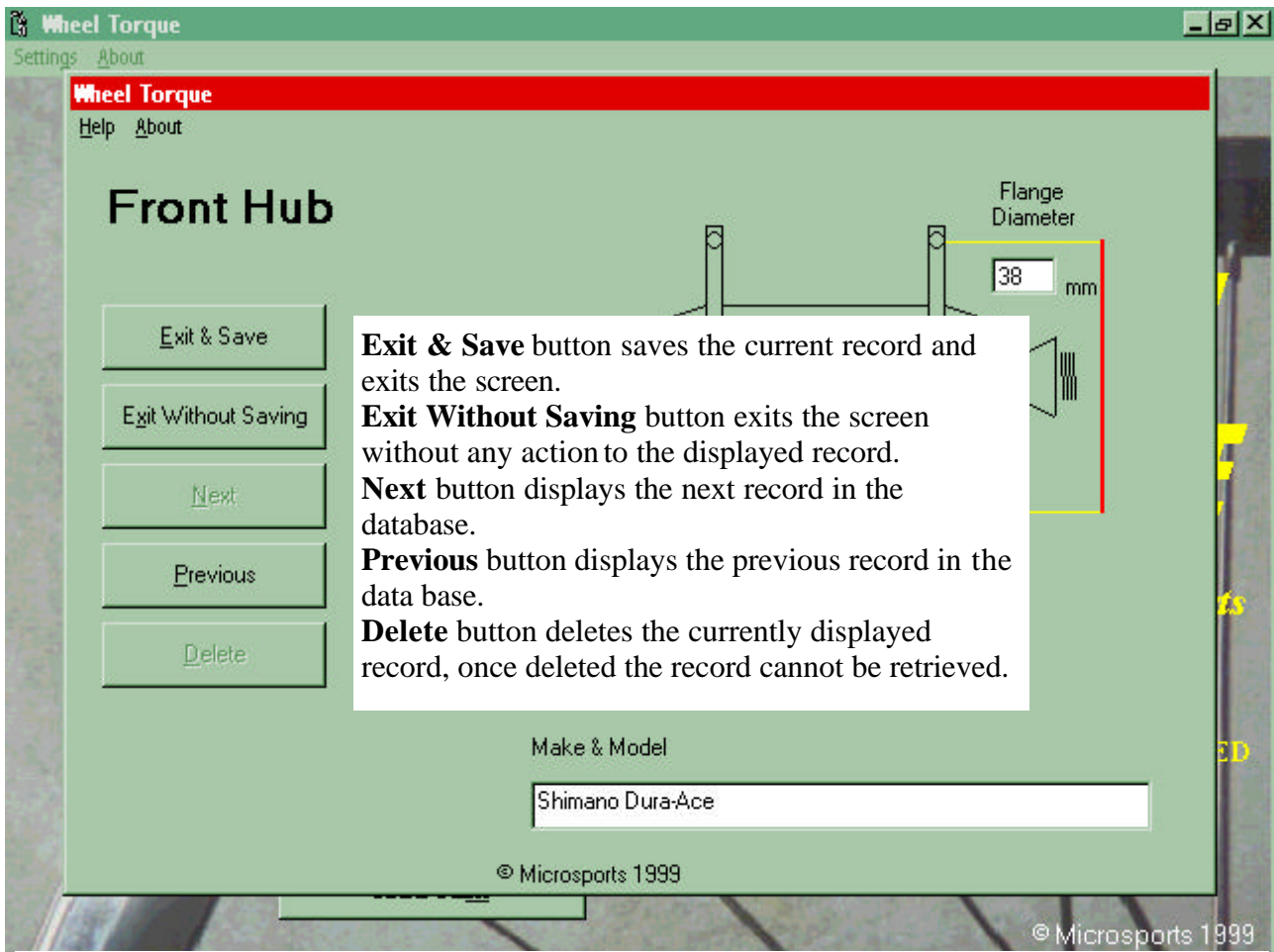
New Wheel Set Rim & Spoke screen has the following options;

- Rim** list shows a list of rims currently in the database, if the database does not contain the desired rim simply click on **Add** from the menu at the top left of the screen, select **Add Rim** from the list and insert the make & model of rim, rim diameter in the appropriate boxes. Click the **Save & Exit** button and the rim will immediately be added to the list.
- Spoke** list shows a list of spokes currently in the database, if the database does not contain the desired spoke simply click on **Add** from the menu at the top left of the screen, select **Add Spoke** from the list and insert the make & model of spoke, spoke diameter in the appropriate boxes. Click the **Save & Exit** button and the spoke will immediately be added to the list.
- Print** button prints all relevant details of the wheel including hub, rim, spokes and spoke lengths for all displayed spoke numbers.
- Save** button or menu item saves the current wheel to a database.
- Back** button or menu item returns the user to the previous screen.
- Exit** button or menu item exits the program.
- More Front** button increases the number of spoke holes on the front wheel by 4 each time to a maximum of 48.
- Less Front** button decreases the number of spoke holes on the front wheel by 4 each time to a minimum of 12.
- More Rear** button increases the number of spoke holes on the rear wheel by 4 each time to a maximum of 48.
- Less Rear** button decreases the number of spoke holes on the rear wheel by 4 each time to a minimum of 16.

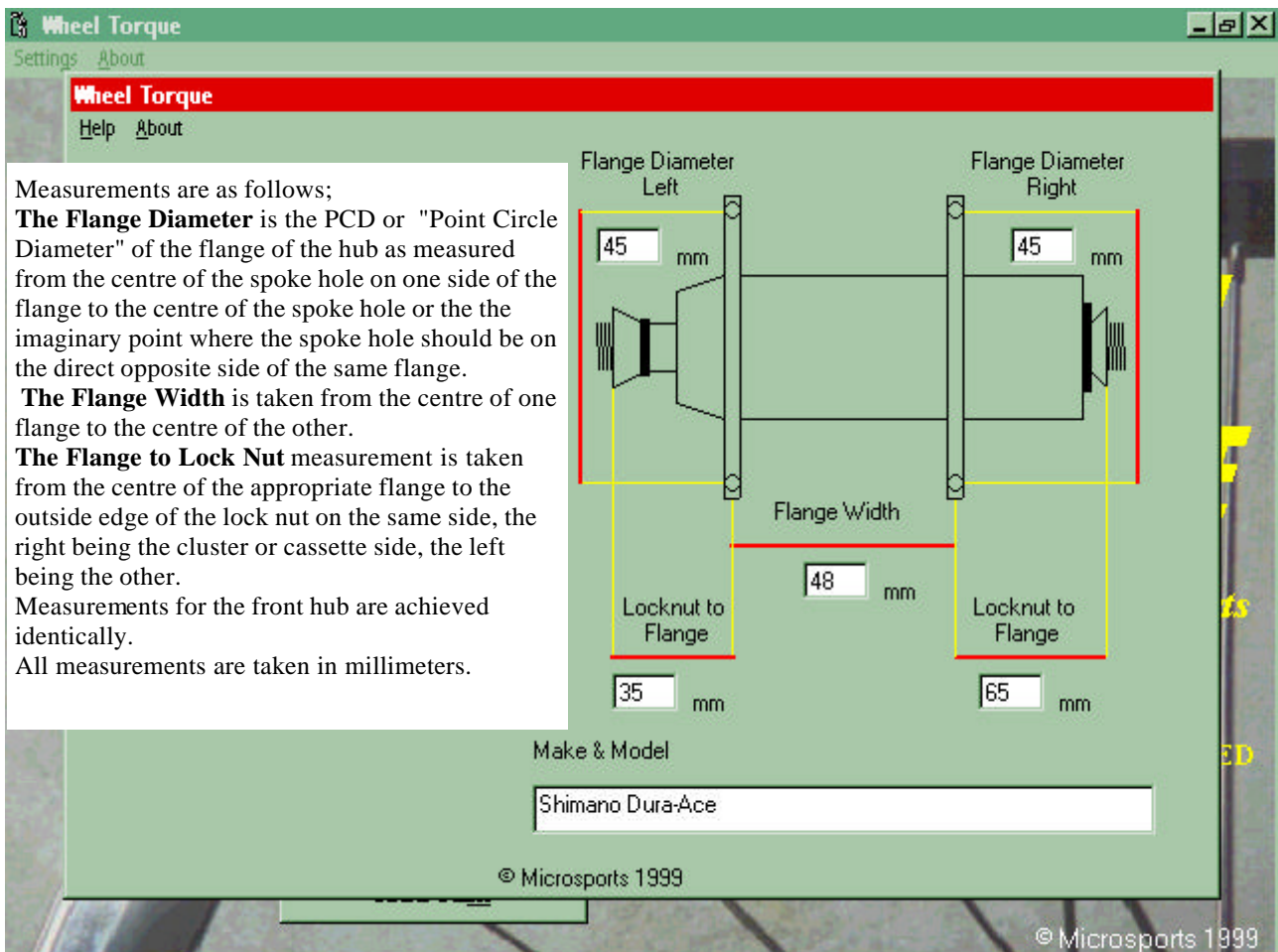


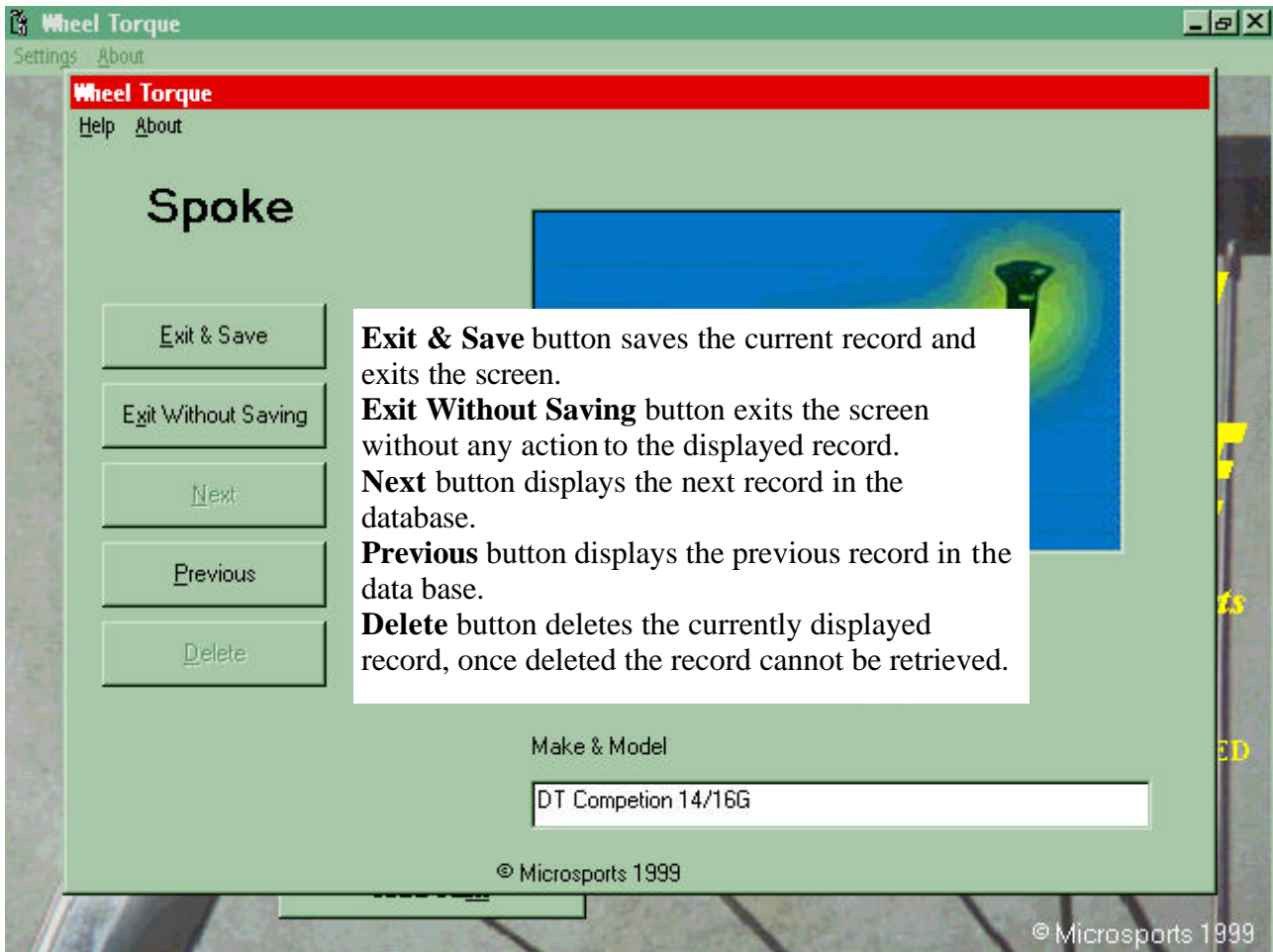
Saved Wheel Set screen has the following options;

- a/ **Front Wheel** list shows a list of front wheels currently in the database. If an identically named rear wheel was saved at the same time, both wheels will be displayed simultaneously.
- b/ **Rear Wheel** list shows a list of rear wheels currently in the database.
- c/ **Print** button prints all relevant details of the wheel or wheels selected including hub, rim, spokes and spoke lengths for all displayed spoke numbers.
- d/ **Back** button or menu item returns the user to the previous screen.
- e/ **Exit** button or menu item exits the program.
- f/ **More Front** button increases the number of spoke holes on the front wheel by 4 each time to a maximum of 48.
- g/ **Less Front** button decreases the number of spoke holes on the front wheel by 4 each time to a minimum of 12.
- h/ **More Rear** button increases the number of spoke holes on the rear wheel by 4 each time to a maximum of 48.
- i/ **Less Rear** button decreases the number of spoke holes on the rear wheel by 4 each time to a minimum of 16.
- j/ **Delete Front** button deletes the currently displayed front wheel.
- k/ **Delete Rear** button deletes the currently displayed rear wheel.

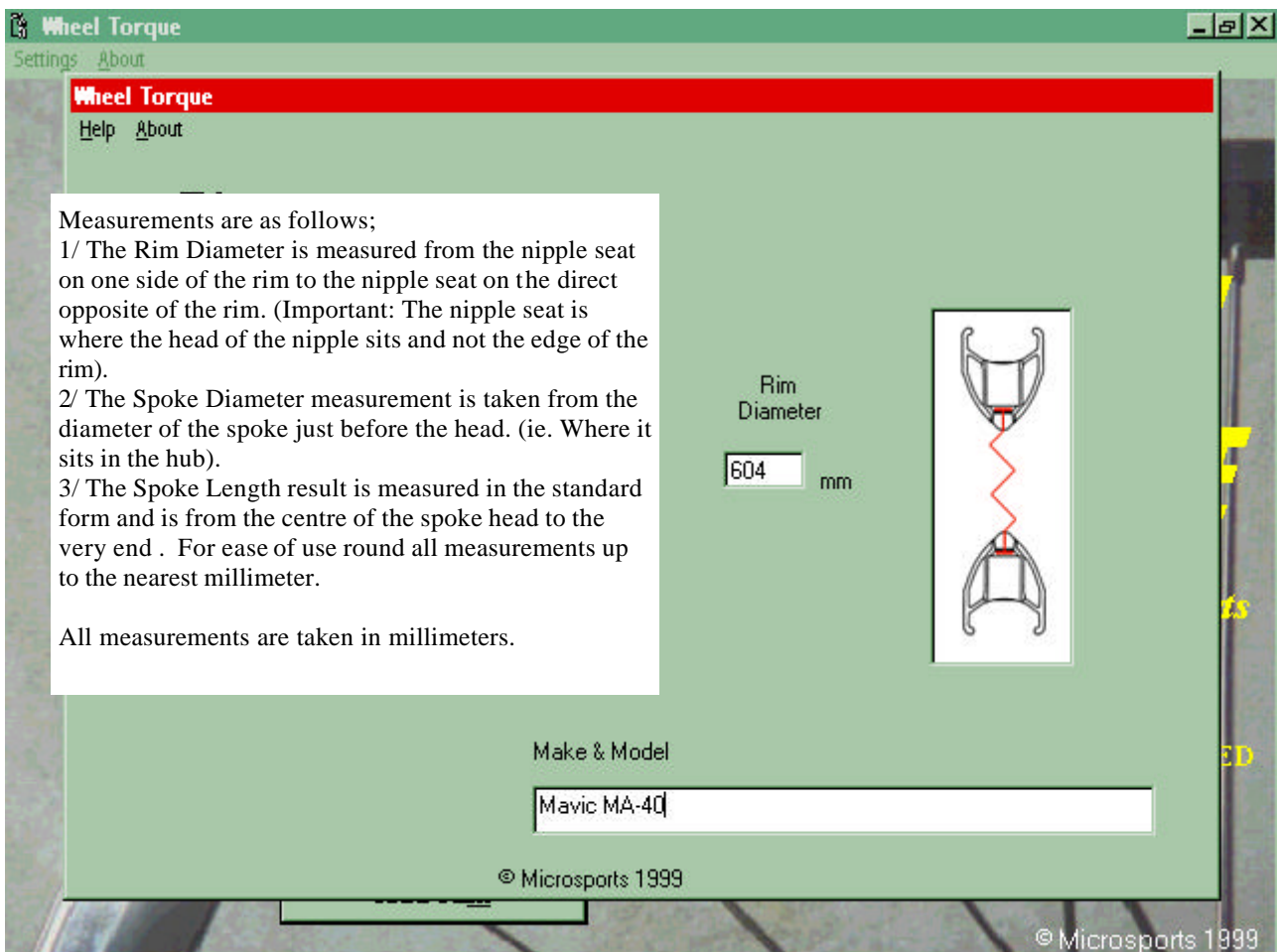


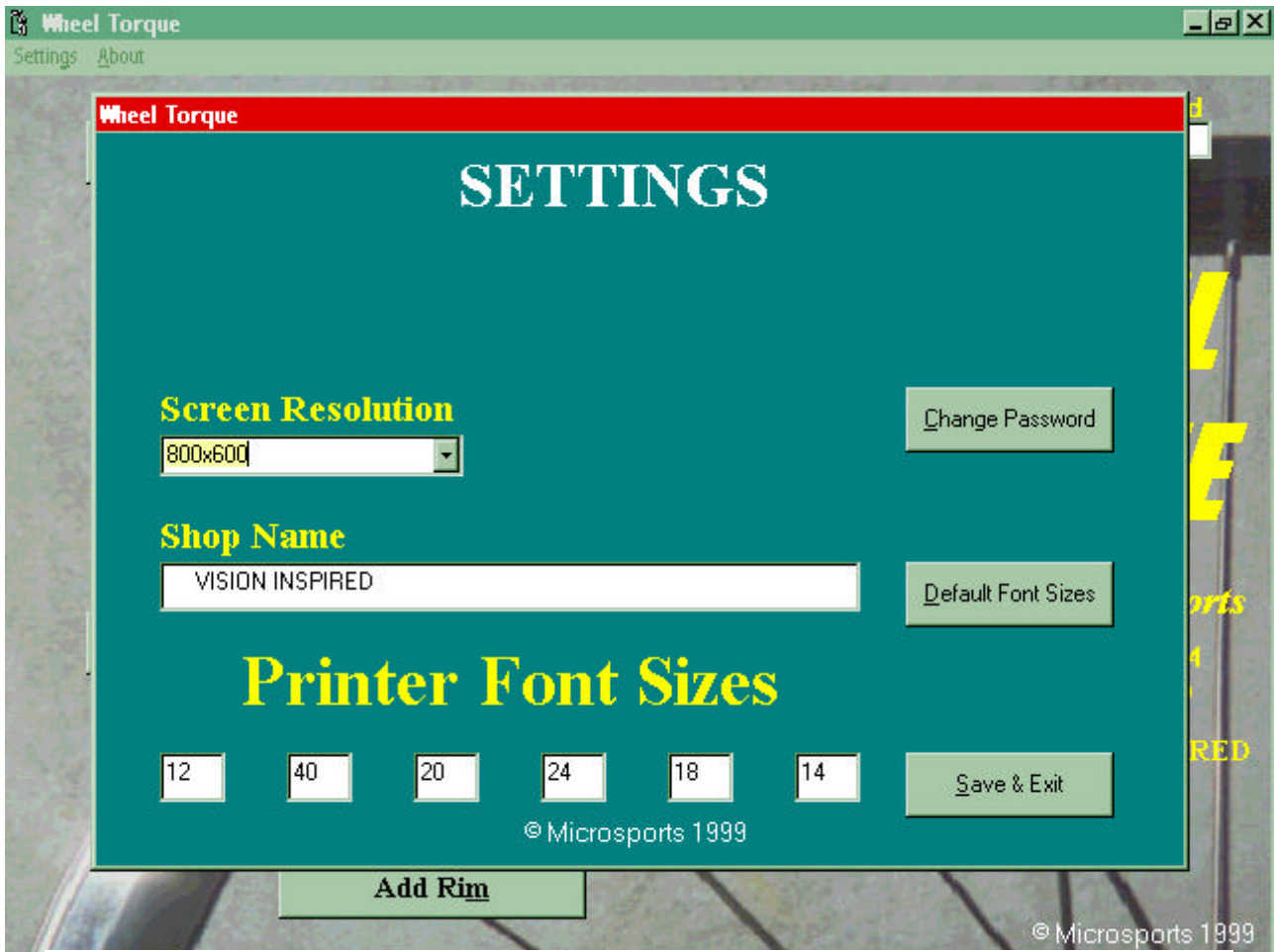
Front & Rear Hub screens allow adding, editing, saving & deleting of any existing or new record. The help menu at the top left of the screen details where measurements





Rim & Spoke screens allow adding, editing, saving & deleting of any existing or new record. The help menu at the top left of the screen details where measurements are made.





The “Settings Screen” is for the fine tuning of the program.

1/ **Change Password:** Once the program has been paid for you, a password is supplied that may be changed at any time. When this button is clicked the program will ask you for your current password, if a valid password is entered then the program will prompt for a new password to be entered and then it will ask for the password to be entered again to confirm it. If the passwords are a match then it will give a message that the new password has been stored otherwise it will prompt for the new password to be entered again.

2/ **Default Font Sizes:** Restores printer font sizes to the original settings, they should never be altered except for some very early model printers. Altering these settings will give some unusual results in the printout.

3/ **Save & Exit:** Exits the “Settings screen” and saves all the current information.

4/ **Screen Resolution:** Set to the current screen resolution of the computer.

5/ **Shop Name:** Change the name here to change the name on the printouts.

6/ **Printer Font Sizes:** Settings for printer fonts (Don’t alter unless printout is abnormal)